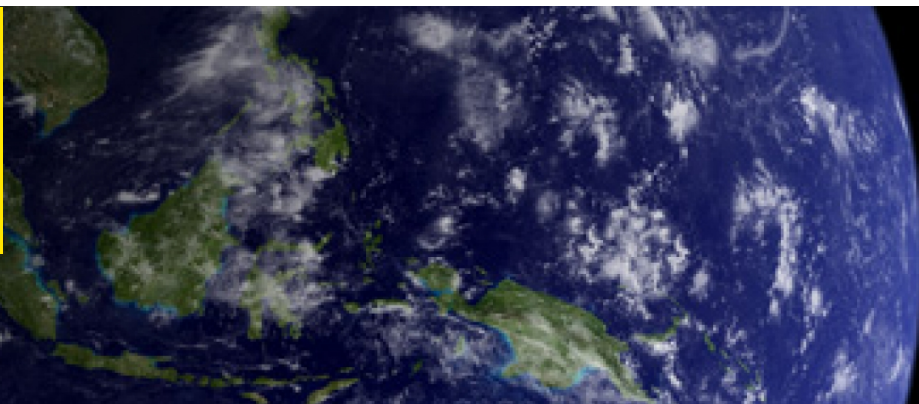




**UNSW**  
SYDNEY



## Climate Change, Climate Dynamics and Climate Extremes

**CCRC is a multi-disciplinary research centre with expertise in the areas of atmospheric, oceanic and terrestrial processes, and the largest university research facility of its kind in Australia. Expertise provides the capability to assess risk associated with climate change, including risks to health, ecosystems, urban systems and financial stability.**

### Competitive advantage

- The CCRC brings together a unique breadth and depth of expertise in climate research spanning ocean, land, atmosphere and climate impacts.

### Impact

- Reliable, robust, evidence-based advice to all levels of government
- Modelling and data to assess risk associated with climate change in business

### Successful Outcomes

- CCRC researchers have worked with a range of government and industry partners to provide bespoke data, tools, modelling and expertise

### Capabilities and facilities

- Scientists at CCRC employ a variety of research tools including global and regional models of the atmosphere, ocean and land surface, coastal domain simulations and process models. Understanding the strengths and weaknesses of these research tools, and the merits of using them for specific applications. Utilise a great variety of data collected from satellites, ships, weather stations, eddy-flux towers and aircraft

### Our partners

- NSW Department of Planning
- Industry and Environment
- Sydney Water
- CSIRO
- NSW Department of Primary Industries

### More Information

Bronwen Smith - Project Officer

Climate Change Research Centre  
(CCRC)

T: +61 (0) 2 9385 9766

E: [ccrc@unsw.edu.au](mailto:ccrc@unsw.edu.au)

UNSW Knowledge Exchange

[knowledge.exchange@unsw.edu.au](mailto:knowledge.exchange@unsw.edu.au)

[www.capabilities.unsw.edu.au](http://www.capabilities.unsw.edu.au)

+61 (2) 9385 5008